

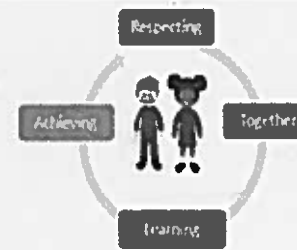


# Meldrum School Newsletter

Newsletter August 2019

Tel. 01651 871100

e-mail: Meldrum.sch@aberdeenshire.gov.uk



## Welcome Back

Welcome back to this new term and another busy session ahead. The adults and children are all settling in well into their new classes and are already into their established school routines.

We are delighted to welcome our staff and pupils back, particularly our newest members of our team (young and older) who have already added even more enthusiasm to our growing learning community.

## Information to Share

As this is our first newsletter of the session we will also attach additional important information. This will include:

- Aberdeenshire Council Parental Information
- Updated Positive Relationships Procedure at Meldrum
- Annual School Calendar (see link near the end of this newsletter)
- Bounce Back Leaflet - The Core Values of Bounce Back

It would be very helpful if you were to read the information as this will help to explain how we can work in partnership and explain the way the school is managed. We very much appreciate parental engagement in our school life and the contribution this makes to our school. Though these contributions are vital it is

also important that you appreciate that it is ultimately the Headteacher who leads and manages the school on a day-to day basis in accordance with Aberdeenshire Council policy and protocols.

## Communication

The success of any complex organisation, like a school, requires to continue to work on improving and promoting good communication. Though we strive to do our very best, it is also important that we work together to avoid any misunderstandings as these can potentially cause unnecessary upset. It is therefore in everyone's interest that we keep in mind our values in school; **learning, achieving, respecting and together**; These are the 'fabric' that binds our school community and this carries with it a collective responsibility of us all to ensure we choose to model behaviours to promote these values.

If you have any learning concerns regarding your child(ren), please contact the school, initially making an appointment with your child's teacher. Members of the school management may also be able to help and will signpost you to the best person to help you.

As you will appreciate, if there are ways we can improve, voicing concerns by contacting the school directly, rather than other unhelpful places such as social media (Facebook etc), will be far

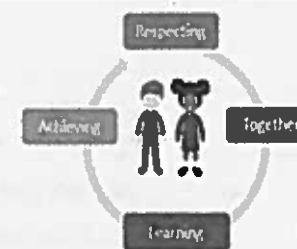


# Meldrum School Newsletter

Newsletter August 2019

Tel. 01651 871100

e-mail: Meldrum.sch@aberdeenshire.gov.uk



more effective. Therefore we would be very grateful if you would support the school by remembering our school values which reflects our total commitment to working together in partnership for the very best outcomes for all of our children.

## School Improvement

As part of our improvement process we will be seeking your feedback and thoughts around a number of areas that we will focus on over this session. These will include:

- Homework
- Positive Relationships
- Communication of learning - termly update and learning journeys review
- Visible learning and children's language of learning
- Programmes of Study in school
- How parents can contribute to our self-evaluation processes to secure improvement for the school

We hope that you will find the time to contribute to some or all of these. Opportunities will also be arranged at our regular MPiP meetings to allow further opportunities for your ideas and suggestions.

## Health and Safety - Parking

I have asked our pupil voice groups to address the continuing issue of unsafe parking in the school. They will be devising a plan

and will be encouraging more people to walk to school and less people parking in school. They will also plan ways to encourage our adult visitors to park safely in bays only. Their campaign will begin soon and therefore we would appreciate your support in ensuring we are all behaving safely in the carpark.

## School Photographs

This term there will be official school photographs on Tuesday 10<sup>th</sup> and Wednesday 11<sup>th</sup> September 2019. This session, official photographs will be class photographs.

## Bounce Back

Our very own wellbeing and resilience programme "Bounce Back" recommences with the topic of Core Values. For those new to Bounce Back, the whole school will be following the same programme topic and to support this at home, a parental advice leaflet will be attached with each newsletter. This gives practical advice and support to help you build our children's resilience.

Welcome back to all our returning children and their families and a warm welcome to all our new children and families. This year we embark on our journey to 1140hours in nursery and we would appreciate your patience as we iron out any problems that arise.

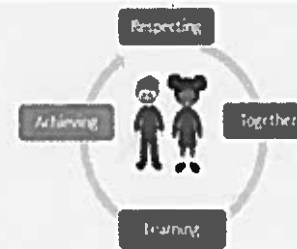


# Meldrum School Newsletter

Newsletter August 2019

Tel. 01651 871100

e-mail: Meldrum.sch@aberdeenshire.gov.uk



## Community Links

The school is always looking to establish wider community links particularly with local business and societies. If you have any suggestions or know of anyone who would be interested in establishing links with the school please let them know we would be delighted to be contacted by them.

## School Nurse Drop In

The school nurse, Leo Walker based in our cluster will be holding a drop in session at Meldrum School on Friday 20<sup>th</sup> September 2019 from 9.15am - 10.00am in the GP Room. As this is a drop in session parents/carers will be able to go direct to the GP Room via the playground. This session is for any parents/cares who wish to discuss any health related concerns regarding their children who attend school.

## Termly Updates and Learning Journey Booklets

We are currently reviewing the ways we communicate our children's learning to you each term. This means that our Termly Update which summarises your children's learning will be shared later this term. Learning Journey Booklets are also currently being reviewed and an updated format will be issued shortly. We will also be asking for your feedback in how useful and informative you are finding the information.

## Parental Interviews

Parental Interviews will take place on week beginning 30<sup>th</sup> September and not as shared in P1 induction information last term. The Parent Interviews will take place on Tuesday 1<sup>st</sup> October from 6.00-8.30pm and Wednesday 2<sup>nd</sup> October from 4.00 - 6.30pm. We are hoping we can trial, for the first time, an online self-booking system, where you will be able to book your own preferred interview slot.

## Calendar

The school calendar is now located on the school website [here](#). This includes all the events planned over the session to give maximum notice of the many events happening over the session.

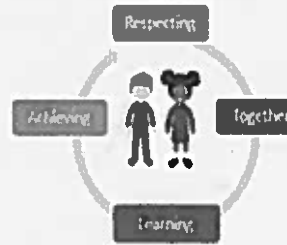


# Meldrum School Newsletter

Newsletter August 2019

Tel. 01651 871100

e-mail: Meldrum.sch@aberdeenshire.gov.uk



## NURSERY NEWS NURSERY NEWS NURSERY

We would like to welcome Mrs Diane Meldrum to Meldrum Nursery. She will join Mrs Sarah Menzies as our Early Years Lead Practitioners. We hope Mrs Meldrum enjoys being part of our Meldrum team.

This is an exciting time of change as we are now operating our new 1140 hours provision. As such, we are all adjusting to staff working shifts and we are endeavouring to ensure that your child's key worker is available to talk to you at either drop off or pick up time but please remember you can talk to any member of staff regarding concerns about your child at any time.

We are also establishing a 'Nurture Hub' this term in our nursery. As part of this process, parents/carers will have an opportunity to join us for a coffee and a chat to meet other parents/carers and staff.

We are now part of the 'Coop Share' scheme and already some of you have enjoyed the produce given to us by the Coop. The purpose of the scheme is to use up unused food e.g. pastries, to be shared with the local community, helping to avoid unwanted waste. These lovely foods will be available for parents/carers to have with their coffee in our Nurture Hub!

We will be conducting some information sharing sessions when we will have presentations about the ideology behind ideas such

as schematic play, loose parts play and lots more.

We hope you will come along to support these events. Nurture Hub coffee mornings will be on Tuesdays and Thursdays. A notice will be posted on the Parents' information board as you come into nursery.

### Dates for your diary

Tuesday, Wednesday, Thursday 1<sup>st</sup>, 2<sup>nd</sup>, 3<sup>rd</sup> October

### Parent Consultations

This is an opportunity for you to discuss, with your child's key worker, how your child has settled into nursery. Lists will be posted on the parents' information wall for you to choose a time slot. If these sessions are unsuitable please talk to your child's key worker and we can arrange another suitable time.

### Wednesday 9<sup>th</sup> October - Open session

Please come along and join your child for part of their nursery day and spend some time sharing their learning experience.





<p><b>Meldrum School</b>  <b>Positive Relationships and Behaviour Procedure</b>  <b>Revised August 2019</b></p>	<p style="text-align: center;"><b>Meldrum School Expectations</b></p> <ul style="list-style-type: none"> <li>• <b>Be Ready for learning</b></li> <li>• <b>Be Respectful to ourselves and each other</b></li> <li>• <b>Learn and play Safely</b></li> </ul>
---	--

At Meldrum School, we encourage pupils to be self-motivated to be the best they can be and feel proud of themselves when they do the right thing. We promote and teach pupils how to develop positive relationships and appropriate behaviours.

#### **Recognition**

Recognition is used to celebrate and praise those who follow the School Expectations. We recognise when pupils demonstrate positive relationships and behaviours and we support pupils who find this challenging. We also recognise those who have shown a special effort to follow school expectations at a particular time and those who go 'above and beyond'. There is a balance of whole class, group and individual recognitions.

Recognitions may include:		
<ul style="list-style-type: none"> <li>• Verbal Praise</li> <li>• House Points</li> <li>• Green Cards</li> <li>• Stickers</li> </ul>	<ul style="list-style-type: none"> <li>• Class Certificates</li> <li>• Assembly Certificates</li> <li>• VIP Cards</li> <li>• Wall Displays</li> </ul>	<ul style="list-style-type: none"> <li>• Class based recognition systems &amp; events</li> <li>• Golden Moments Book</li> <li>• Visit SLT to share Good News</li> <li>• School Newsletter recognition</li> </ul>

#### **Role of all Adults in School**

- Model School Expectations
- Apply the Positive Relationships and Behaviour Policy and Procedure consistently
- Recognise pupils who demonstrate positive relationships and behaviours and support pupils who find this challenging
- Fully investigate circumstances of any relationship conflict or inappropriate/unacceptable behaviours
- Use Restorative Approaches to resolve all situations
- Use supportive actions to help pupils learn how to have positive relationships and behaviours
- Ensure any consequences used are appropriate and proportionate
- Teachers will maintain a Cause for Concern Record for pupils when required
- The Senior Leadership Team (SLT) will be informed about Amber Cards and Red Cards and become involved in supporting pupils as detailed in the following tables
- All adults will maintain confidentiality and never share personal information about incidents, supportive measures or consequences with any other third party

#### **Role of Parents/Carers**

- Model School Expectations
- Support the school's Positive Relationships and Behaviour Policy and Procedure
- Communicate any concerns regarding their child/ren or any issues which may impact on their child's relationships or behaviour
- Promote their own child/ren to be accountable for their own relationships and behaviours
- Work in partnership with the school and other agencies (if appropriate) to meet the needs and the best interests of their own child/ren

### Reminders, Amber Cards and Red Cards

Reminders, Amber Cards and Red Cards are used to raise awareness that pupils are needing support to have positive relationships and behaviours in school. Amber Cards and Red Cards are reminders for pupils to work harder at their relationships and behaviours and an indication to school staff and parents/carers that pupils may need some additional support to manage themselves more appropriately in school. Once dealt with, all Amber Cards are retained by Class Teachers and Red Cards should be given to the Depute Head Teachers. The Amber Cards and Red Cards system starts afresh each term.

In the classroom, reminders may include...	In the playground, reminders may include...
Verbal reminders and reinforcement of expectations	Verbal reminders and reinforcement of expectations
Temporary move of seats	Temporarily playing in the Quiet Playground
Time Out of situation by leaving classroom	Time Out of situation by staying inside
Increased adult support	Increased adult support

Amber Cards are issued for inappropriate behaviours	
1 <sup>st</sup>	Discussion between Class Teacher and pupil
2 <sup>nd</sup>	Class Teacher to share concern with parents/carers in person, in a phone call or by email.
3 <sup>rd</sup>	Class Teacher to arrange meeting with parents/carers to discuss how best to support pupil. Depute Head informed of meeting. Pupil encouraged to be at meeting.
4 <sup>th</sup>	Depute Head and Class Teacher to arrange further meeting with parents/carers to consider further support required. Pupil encouraged to be at meeting.

Red Cards are issued for unacceptable behaviours	
1 <sup>st</sup>	Class Teacher to share concern with parents/carers in person, in a phone call or by email.
2 <sup>nd</sup>	Class Teacher to arrange meeting with parents/carers to discuss how best to support pupil. Depute Head informed of meeting. Pupil encouraged to be at meeting.
3 <sup>rd</sup>	Depute Head and Class Teacher to arrange further meeting with parents/carers to consider further support required. Pupil encouraged to be at meeting.

### Actions Arising from the Issuing of Amber and Red Cards

As every individual pupil and details of situations are different, the responses and actions will be specific to individual circumstances. In addition to the stepped actions detailed above, actions may also include:

- Alternative arrangements at specific times during the school day
- Use of Reflection Sheets and/or Target Sheets
- Additional pastoral support
- Intervention Prevention Teacher support
- Pupil Support Worker support
- Advice from School Educational Psychologist
- Single Agency GIRFEC assessment
- Single Agency co-ordinated targeted support
- Seeking advice from Social Work or Health professionals
- Multi Agency GIRFEC assessment
- Multi Agency co-ordinated targeted support
- Courting Exclusion
- Internal Exclusion
- School Exclusion

### Bullying

When groups of children are learning how to be together in the classroom, around the school or in the playground, there can sometimes be conflict between them. This is a part of growing up and learning how to manage tricky social situations and is not bullying. Bullying is sustained victimisation and at Meldrum School, allegations of bullying are taken seriously, and we will do everything we can to resolve the situation as quickly as possible.

## Parent Information: Core values

Our values are statements about how we think we should behave and what we believe is important. Our values are our moral map, which guide our behaviour and actions. The following values are taught in the BOUNCE BACK! program. Acting on these values can increase your child's sense of being a decent, worthwhile person and help them to be more resilient.

### Key messages to communicate to your child about values

#### **Your values are easy to talk about but harder to act on**

The real test is whether you still follow your personal values when it is inconvenient for you or when there might be possible unpleasant or uncomfortable outcomes for you. Nobody is perfect, but it's important to try and live by your values even though you may not always succeed as well as you would like. Keep trying to improve.

#### **Being honest**

Being honest means telling the truth and not stealing; it means giving things back when they belong to someone else and 'owning up' when you have done the wrong thing.

#### **Being fair**

Being fair means following the rules and not cheating; it means returning favours and kindnesses, and helping others to get justice and a fair deal.

#### **Being responsible**

Being responsible means not letting people down. It means doing the things that you have to do without being reminded. It also means choosing sensible behaviour instead of silly or unsafe behaviour.

#### **Being kind**

Being kind means caring about other people and their wellbeing, and showing support and thoughtfulness to others.

#### **Being cooperative**

Cooperating means working together with someone to achieve something that you both want. It requires sharing ideas and resources, listening, encouraging each other, making sure that both of you have a say, doing your share of the work, and making decisions together that are fair to both of you.

#### **Accepting differences in other people**

Everyone is different from you in some way and that's OK. If you accept that other people are different (e.g. in where they come from, what they look like, what they like to eat or do, and in their opinions) then you get to know more people (and not just those who are similar to you), you include people who are different from you in games and conversation, and you don't tease or exclude them.

#### **Being friendly**

Being friendly means being kind and welcoming to others and trying to include people (even if they are not your close friends or they are people who are sometimes hard to like). This means looking in their eyes and smiling, saying hello, being kind and inviting them to join in games and conversations. Being friendly towards strangers is not a good thing to do until you are very sure they are safe people.

**Being respectful**

Being respectful means treating others as you would like them to treat you. It means thinking about other people's feelings and rights, being polite and using good manners, and not insulting or hurting others or their property. If you want people to respect your rights, then you have to respect their rights.

**Showing self-respect**

Self-respect means looking after yourself and standing up for yourself because you think you matter and should be treated well by others.

**What can you do to help your child develop and live by good values?**

- Give your child positive feedback when they act honestly (e.g. when they tell the truth, own up to what they have done, avoid the temptation to keep something that belongs to someone else, and when they try to identify who owns something they have found that doesn't belong to them).
- Play age-appropriate board and card games with your children. This provides an opportunity for you to reinforce playing fairly by following the rules of a game and not cheating. Playing games with your children also provides an opportunity for them to practise social skills such as being a good winner and loser.
- Help them to develop kindness and a sense of fairness towards others who are less fortunate than themselves. Model for them some ways to support others who are in need.
- Encourage your child to appreciate and return the kindnesses and favours they receive from others.
- Present different people's points of view when talking problems through with your child. This helps them gain a sense of what's fair for everyone involved.
- Give your child regular chores and give them positive feedback when they do these without being reminded. Stress that people will trust and respect you more when you behave responsibly.
- Model cooperative behaviours for your child by working with them on a project (e.g. building a model) or task (e.g. tidying up the garage). Comment on how and why things went well (e.g. you both did a good share of the work, each did the part they were good at and each respected what the other person did).
- Provide opportunities for your child to socialise with their extended family, neighbours and friends, and participate in community groups such as clubs and sporting teams. Emphasise the importance of being friendly and accepting differences in people and discuss with your child how they might do this in each situation. Show them by example too.
- Never give up! Sometimes there is a 'sleeping effect' and values that your child didn't seem to 'take up' at an earlier age pop up in their behaviour when they are older.



## Meldrum School

### Parent/Carer School Calendar 2019/20



*Entries in italics detail our reporting calendar for the year ahead.*

*In addition to the School Calendar detailed below, each class/year group will host an additional event during the school year where parents/carers will have the opportunity to come into school to experience an aspect of their child's learning.*

<b>Term 1</b>		
Monday 19 <sup>th</sup> August	Inservice 1	9.00am – 3.00pm
Tuesday 20 <sup>th</sup> August	Inservice 2	9.00am – 3.00pm
Wednesday 21 <sup>st</sup> August	School reopens for pupils	
Wednesday 4 <sup>th</sup> September	<i>P1 Curriculum Workshop</i>	6.30pm
Week beginning Monday 9 <sup>th</sup> September	<i>Class Termly Updates to be posted on school website this week</i>	
Tuesday 10 <sup>th</sup> September and Wednesday 11 <sup>th</sup> September	School photographs	
Wednesday 11 <sup>th</sup> September	<i>P1 Open Evening</i>	6.30pm
Wednesday 11 <sup>th</sup> September	Ardeonaig Parent Meeting 1, GP Room	7.00pm
Saturday 14 <sup>th</sup> September	MPiP Welcome Back Picnic	12.00 - 3.00pm
Week beginning Monday 16 <sup>th</sup> September	<i>Parents of Children with IEPs to be invited into school for IEP Planning Meeting</i>	
Monday 16 <sup>th</sup> September	MPiP Meeting, GP Room	7.00pm
Sunday 29 <sup>th</sup> September	MPiP Sponsored Walk, Haddo	
Tuesday 1 <sup>st</sup> October	<i>Parent Consultations</i>	6.00 – 8.30pm
Tuesday 1 <sup>st</sup> October	<i>Nursery Parent Consultations</i>	During sessions
Wednesday 1 <sup>st</sup> October	<i>Parent Consultations</i>	4.00 – 6.30pm
Wednesday 1 <sup>st</sup> October	<i>Nursery Parent Consultations</i>	During sessions
Thursday 2 <sup>nd</sup> October	<i>Nursery Parent Consultations</i>	During sessions
Wednesday 9 <sup>th</sup> October	<i>Nursery Open Session</i>	
Thursday 10 <sup>th</sup> October	School closes to pupils at 3.30pm for October Holidays	
Friday 11 <sup>th</sup> October	Inservice 3	

<b>Term 2</b>		
Monday 28 <sup>th</sup> October	School reopens for pupils	
Monday 28 <sup>th</sup> October	<i>IEPs issued to parents</i>	
Saturday 2 <sup>nd</sup> November	Halloween Discos	P1-2 12.00 – 1.00pm P2-3 1.30 – 2.30pm P4-7 3.00 - 4.00pm
Week beginning Monday 11 <sup>th</sup> November	<i>Class Termly Updates to be posted on school website this week</i>	
Wednesday 13 <sup>th</sup> November	MPiP Meeting, GP Room	7.00pm
Monday 18 <sup>th</sup> November	Inservice 4	
Tuesday 19 <sup>th</sup> November	Inservice 5	
Saturday 23 <sup>rd</sup> November	MPiP Christmas Fayre	11.00am – 2.00pm
Tuesday 10 <sup>th</sup> December	<i>Nursery Stay and Play</i>	During sessions
Wednesday 11 <sup>th</sup> December	Christmas Show Dress Rehearsal	Time TBC
Thursday 12 <sup>th</sup> December	<i>P3, P5, P7 Christmas Show Performance</i>	2.30pm and 6.30pm
Friday 13 <sup>th</sup> December	<i>P3, P5, P7 Christmas Show Performance</i>	2.30pm
Monday 16 <sup>th</sup> December	<i>P1 Christmas Singalong</i>	1.45pm
Monday 16 <sup>th</sup> December	<i>P2, P4, P6 Christmas Craft Afternoon</i>	2.30 – 3.15pm
Tuesday 17 <sup>th</sup> December	P6 and P7 Christmas Party	AM
Tuesday 17 <sup>th</sup> December	P4 and P5 Christmas Party	PM
Tuesday 17 <sup>th</sup> December	Nursery Induction Meeting for January Starts, Otter Room	6.30pm
Wednesday 18 <sup>th</sup> December	P2 and P3 Christmas Party	AM
Wednesday 18 <sup>th</sup> December	P1 Christmas Party	PM
Thursday 19 <sup>th</sup> December	Christmas Service, Meldrum Church	10.00am
Friday 20 <sup>th</sup> December	Nursery Parties	AM and PM
Friday 20 <sup>st</sup> December	School Closes at 3.30pm for Christmas Holidays	

<b>Term 3</b>		
Monday 6 <sup>th</sup> January	School reopens for pupils	
Week beginning Monday 20 <sup>th</sup> January	<i>Class Termly Updates to be posted on school website this week</i>	
Week beginning Monday 20 <sup>th</sup> January	<i>Parents of Children with IEPs to be invited into school for IEP Review Meeting</i>	
Thursday 23 <sup>rd</sup> January	MPIP Meeting, GP Room	7.00pm
Friday 14 <sup>th</sup> February	School closed – Occasional Holiday	
Monday 17 <sup>th</sup> February	School closed – Aberdeenshire Holiday	
Tuesday 18 <sup>th</sup> February	Inservice 6	
Wednesday 19 <sup>th</sup> February	Inservice 7	
Monday 24 <sup>th</sup> February	<i>IEPs issued to parents</i>	
Wednesday 26 <sup>th</sup> February	<i>Early Learning Workshop for pre-school parents</i>	9.15am and 1.00pm
Saturday 29 <sup>th</sup> February	MPIP Spring Disco	P1-2 12.00 – 1.00pm P2-3 1.30 – 2.30pm P4-7 3.00 - 4.00pm
Monday 9 <sup>th</sup> March	MPIP Meeting, GP Room	7.00pm
Wednesday 25 <sup>th</sup> March	<i>Sharing Learning Open Afternoon</i>	2.30 – 3.15pm
Friday 27 <sup>th</sup> March	<i>Nursery Stay and Play</i>	During sessions
Friday 3 <sup>rd</sup> April	School Closes for Easter Holidays	

<b>Term 4</b>		
Monday 20 <sup>th</sup> April	School closed – Occasional Holiday	
Tuesday 21 <sup>st</sup> April	School reopens for pupils	
Wednesday 22 <sup>nd</sup> April	Ardeonaig Parent Meeting 2, GP Room	7.00pm
Week beginning Monday 4 <sup>th</sup> May	<i>Class Termly Updates to be posted on school website this week</i>	
Wednesday 6 <sup>th</sup> May	MPIP Meeting, GP Room	7.00pm
Friday 8 <sup>th</sup> May	School closed – May Day Holiday	
Monday 11 <sup>th</sup> May	<i>IEPs issued to parents</i>	
Wednesday 13 <sup>th</sup> May	<i>Reports Issued to Parents</i>	
Wednesday 13 <sup>th</sup> May	P1 Induction Meeting, GP Room	6.30pm
Wednesday 20 <sup>th</sup> May	<i>Parent Consultations and Open Evening</i>	6.00 – 8.00pm
Monday 25 <sup>th</sup> May	P7 to Ardeonaig	
Thursday 28 <sup>th</sup> May	<i>Nursery Sports Day</i>	During sessions
Monday 1 <sup>st</sup> June	School closed – Occasional Holiday	
Wednesday 3 <sup>rd</sup> June	<i>Nursery Stay and Play</i>	During sessions
Thursday 4 <sup>th</sup> June	<i>Nursery Sports Day (back up)</i>	During sessions
Friday 5 <sup>th</sup> June	<i>Sports Day</i>	
Tuesday 9 <sup>th</sup> June	<i>Nursery Parent Consultations for January 2019 starts</i>	During sessions
Wednesday 10 <sup>th</sup> June	Nursery Induction Meeting, Otter Room	6.30pm
Friday 12 <sup>th</sup> June	<i>Sports Day (back up)</i>	AM and PM
Week beginning Monday 15 <sup>th</sup> June	<i>IEPs – targets reviewed, collated and feedback to parents</i>	
Tuesday 16 <sup>th</sup> June, Wednesday 17 <sup>th</sup> June and Thursday 18 <sup>th</sup> June	P7 Academy visit days	
Thursday 18 <sup>th</sup> June	MPIP AGM, GP Room	7.00pm
Friday 19 <sup>th</sup> June	<i>Sports Day (back up)</i>	AM and PM
Friday 26 <sup>th</sup> June	<i>Sports Day (back up)</i>	AM and PM
Monday 29 <sup>th</sup> June	P2-6 Meet the Teacher this week	
Tuesday 30 <sup>th</sup> June	'The Railway Children' Production	
Tuesday 30 <sup>th</sup> June	P1 Meet the Teacher	3.45pm
Wednesday 1 <sup>st</sup> July	P1 Meet the Teacher	3.45pm
Thursday 2 <sup>nd</sup> July	<i>P7 Leavers' Assembly, Meldrum Church</i>	10.00am
Friday 3 <sup>rd</sup> July	<i>Nursery End of Year Celebration</i>	During sessions
Friday 3 <sup>rd</sup> July	School closes at 3.30pm for Summer Holidays	

For school session dates beyond June 2020, please see Aberdeenshire Council website  
<https://www.aberdeenshire.gov.uk/schools/parents-carers/school-term-dates-and-in-service-days/>

For regular school updates follow us on Twitter @MeldrumSchool or visit our school website  
<http://meldrum-pri.aberdeenshire.sch.uk/>



## In Aberdeenshire we recognise that

Parents are the single most important influence on their children's development, learning and achievement.

Aberdeenshire Council is committed to building a climate of trust through genuine and honest engagement and collaboration to:

- Ensure parents are supported to be fully involved in the life and work of their children's early learning setting or school
- encourage and support collaborative partnerships between practitioners, parents and families
- Get the right support in place so parents can engage in their child's learning.

## Contact us

**Aberdeenshire Council**  
**Education and Children's Services**  
Woodhill House  
Westburn Road  
Aberdeen  
AB16 5GB

Tel 03456 08 12 02

Visit our website:

[www.aberdeenshire.gov.uk/  
schools/parents-carers/involvement/  
parent-forums-and-councils](http://www.aberdeenshire.gov.uk/schools/parents-carers/involvement/parent-forums-and-councils)

**Aberdeenshire**  
COUNCIL



## Parents as Partners



The term "parent" refers to anyone with parental responsibility - ie parents or carers

   @aberdeenshire

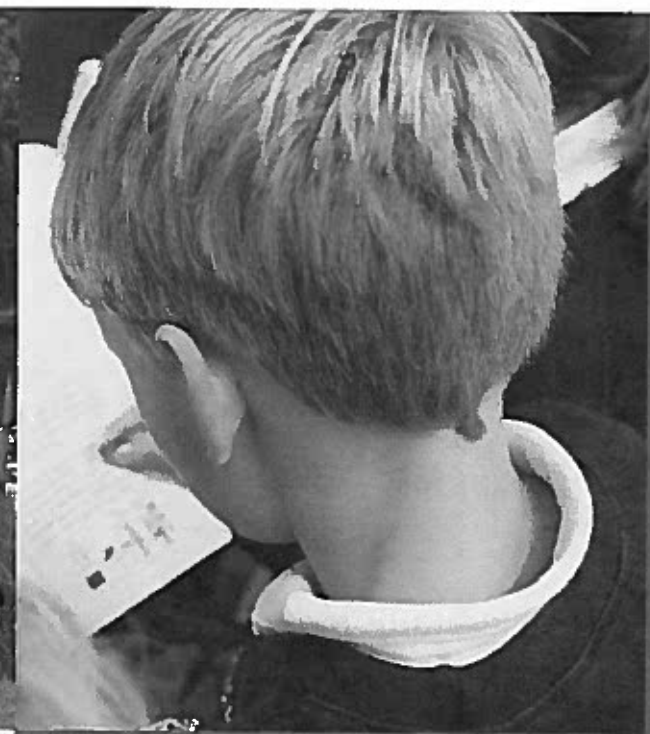
From mountain to sea

## Partnership working

In Aberdeenshire we are committed to improve the quality and extent of parents involvement in their child's learning. The recent consultation on our Parental Involvement and Engagement Strategy showed that the majority of parents value their relationship with the school and are committed to be even more engaged for both their own children and the general good of the school. To have these good relationships, however, it is important that we each understand the different roles parents, teachers and the wider community have in making sure we have schools where all young people can attain and achieve.

Ensuring we use our resources wisely, particularly how we deploy our staff and budgets is a key function of the Education Authority. To do this we have a number of policies and guidelines - some national and some local which we must use to fulfill this function.

Head Teachers are expected and empowered to make decisions about their school based on these policies and their professional judgement. If there is an individual issue in your school we will make clear the policy which supports/ informs the Head Teachers' decisions.



### What you can expect from us:

- A positive school ethos and high expectations
- Effective, clear and respectful communication
- A commitment to do our very best and strive to get it right for every child in our community within existing resources
- A commitment to work with parents and other professionals to ensure that together we can support your child to achieve their best
- We will operate within Aberdeenshire Council's policies and guidance taking account of parental rights and responsibilities.

### What we expect from you:

- Support the school's ethos and expectations
- Effective, clear and respectful communication
- A realistic understanding that schools need to support all their young people within the constraints of available resources
- That you will work with us and other agencies to support your child to achieve their best
- Your support and understanding of our policy framework and professional standards.